

## Couplings

( TRACTOR )



( TRAILER )



EMERGENCY

Part Ref

SSVCA7IR

SSVCA22IR

Part Ref

FC7IR

FC22IR

Part Ref

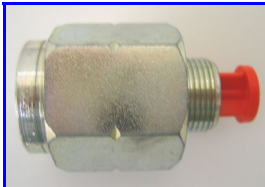
MC7IR

MC22IR

Thread Size

1/2" BSP

M22 x 1.5



AUXILIARY

Part Ref

SSVCA7IR

SSVCA22IR

Part Ref

FCA7IR

FCA22IR

Part Ref

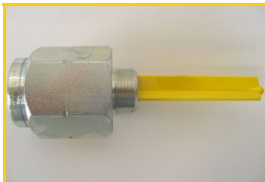
MCA7IR

MCA22IR

Part Ref

1/2" BSP

M22 x 1.5



SERVICE

Part Ref

SSV7IR

SSV22IR

Part Ref

MC7IR

MC22IR

Part Ref

FCOV7IR

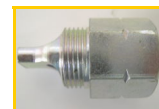
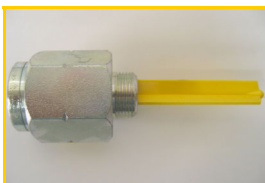
FCOV22IR

Part Ref

1/2" BSP

M22 x 1.5

OR



SERVICE

Part Ref

SSV7IR

SSV22IR

Part Ref

MC7IR

MC22IR

Part Ref

FC7IR

FC22IR

Part Ref

OV7IR

OV22IR

Part Ref

1/2" BSP

M22 x 1.5

TEL: 01474 535456 / FAX: 01474 537323

sales@airbrakeconnections.co.uk

## Couplings

### BRITISH STANDARD BSAU138b:2000

( TRACTOR )



( TRAILER )



EMERGENCY

Part Ref
SSVCA16FH
SSVCA22FH

Part Ref
MC16FH
MC22FH

Thread
M16 x 1.5
M22 x 1.5



SERVICE

Part Ref
SSV16FH
SSV22FH

Part Ref
FCOV16FH
FCOV22FH

Thread
M16 x 1.5
M22 x 1.5

The British Standard BSAU138a:1980 for 'C' type couplings assemblies has been superseded by BSAU138b:2000, which addresses the concerns of U.K haulage industry, with regard to quality and compatibility of couplings currently in use.

The new standard requires one piece couplings that cannot be readily de-assembled, and meets improved valve lift dimensions ensuring adequate airflow (See one piece BSAU138b:2000 above).

# Complete Coil Coupling Kit

**FITTED WITH NEW BSAU138b:2000  
STANDARD COUPLINGS**

Part Ref: ABCA1

Emergency Line



Service Line



Provides vehicle safety, lower operational costs & 'Peace of Mind'.  
Specify coupling kits from Air Brake Connections meet the new standard and are  
manufactured and tested by the principal supplier and designers.

### ABCA1 Kit consists of the following:

1 x Din Red 22 Turn x M22 x 1.5 Air Coil	1 x Din Red 22 Turn x M22 x 1.5 Air Coil
1 x self Seal Valve M22 x 1.5 (SSVCA22FH)	1 x self Seal Valve M22 x 1.5 (SSVCA22FH)
1 x Male 'c' M22 x 1.5 (MC22FH)	1 x Male 'c' M22 x 1.5 (MC22FH)



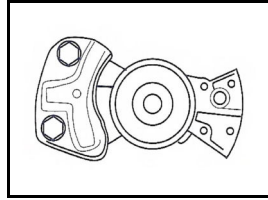
#### Benefits:

- Reduces fitting time.
- No tools required.
- Couplings supplied tested.
- Din spec euro coils c/w spring guard.
- Colour coded standards attached to couplings.
- Eliminates leakage.
- Reduce chance of tampering.



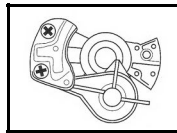
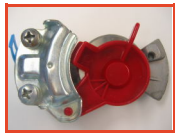
## Palms & Valves

### Palm Coupling (Universal)



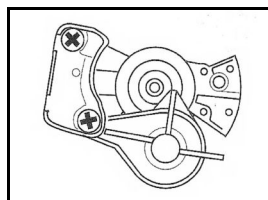
Part Ref	Thread Size
PALM7	1/2" BSP
PALM16	M16 x 1.5
PALM22	M22 x 1.5

### Palm Coupling (Operating)



Part Ref	Thread Size
PALM7R	1/2" BSP
PALM7Y	1/2" BSP
PALM16R	M16 x 1.5
PALM16Y	M16 x 1.5
PALM22R	M22 x 1.5
PALM22Y	M22 x 1.5

### Palm Coupling (Auto Self Seal)



Part Ref	Thread Size
PALM16RA	M16 x 1.5
PALM16YA	M16 x 1.5
PALM22RA	M22 x 1.5
PALM22YA	M22 x 1.5

### In Line Filters



Part Ref	Thread Size
ILF22	M22 x 1.5

### Park Valve



Part Ref	Thread Size
PV16	M16 x 1.5

### Shunt Valve



Part Ref	Thread Size
SV16	M16 x 1.5

### Double Check Valve



Part Ref	Thread Size
DCV	M16 x 1.5

## Coupling Accessories



Airline Coupling Lock

Part Ref: **ABCCL2**



- The Coupling lock locks over the male coupling, preventing the male coupling from being unscrewed from the trailer or the trailer from being coupled up.
- Each lock is supplied with two keys, which are safely tucked inside the plastic cap for transit.
  - Compact, rugged and simple to operate.
  - To fit, remove key and push lock onto male coupling.
  - Over 10'000 key combinations.
- Sets of locks can be supplied individually keyed or keyed alike (a number of locks operating from the same key).
  - High visibility reflective sleeves are available for the locks.



Test Tool and Gauge

Part Ref: **FCTG / IR**



- Securely boxed complete with gauge.
- This tool allows you to check the levels of lift the female couplings will cause when coupled to the male self sealing valve.
  - The gauge checks the correct operation of the test tool.
    - Double band in indicator section.
    - Start of yellow band indicates minimum requirement of 3 mm lift.
    - Start of green band indicates preferred level of lift for correct operation - 4 mm.
- Used to verify correct manufacture and installation of female service line coupling.
  - As supplied to VOSA and OEM.



Dummy Couplings - Part Ref: **FCMCDUM**

- Secure Storage locations for couplings.
  - Reduce damage to air coils.
    - Compact size.
- Chain and split rings available.



## Test Gauge Kits

- Enable you to identify the air pressure from any given test point
- Enable you to determine the air pressure from Truck to Trailer
  - Pre MOT Testing
  - Faulty valve indication
    - Calibration
  - Load sensing valve testing
  - Balancing air pressure



Part Ref  
**ABC009**



ABC009 Contains:

- 1 Gauge 0—11 Bar (Max 160 PSI)
- 2 Coupling Testers
- Hard Carry Case
- 2 Mtr's of High Visibility PVC c/w Test Point Adaptors



Part Ref: **ETB001V**

ETB001V Contains:

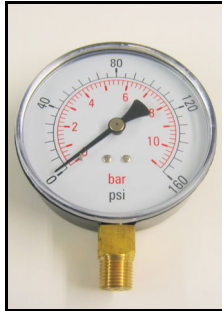


- 1 Gauge 0—11 Bar
- 1 Gauge 0—16 Bar
- 2 x 2 Mtr's of High Visibility PVC c/w Test Point Adaptors

Test Coupling Tee Piece

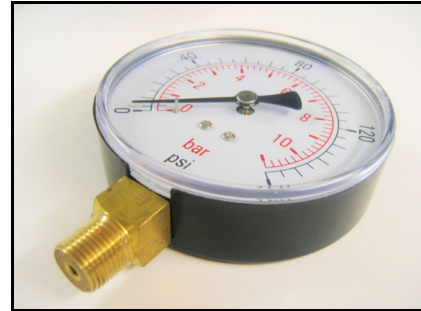
Service Line Coupling Tester

## Test Gauges & Accessories



0 - 11 Bar Test Gauge

Part Ref: **TG1B**  
(M16 x 1.5 Thread)



0 - 11 Bar Test Gauge  
Part Ref: **TG1**

Or

0 - 16 Bar Test Gauge  
Part Ref: **TG2**



Both TG1 and TG2 have M16 x 1.5 Thread and are Rubber cased heavy duty Gauges



Test  
Gauge  
Adaptors

Part Ref	Thread	Tube ID
TPA1	M16 x 1.5	3/16" - 5 mm
TPA2	M16 x 1.5	1/4" - 7 mm
TPA3	M16 x 1.5	3/8" - 10 mm

(TPA2 & TPA3 have a knurled barrel)

## Test Gauge Boxes



Part Ref: **TGB2**

Holds up to two  
Gauges  
complete  
with hoses

Part Ref: **TGB3**

Holds up to three  
Gauges  
complete  
with hoses

